

Daniel Lewis Krauthamer

Trio for

Twelve Instrumentalists (2001)

To Gene Young and the
Peabody Concerto

Instrumentation

Flute (later with Piccolo)

Oboe

Clarinet in Bb

Bassoon

Horn in F

Trompet in C

Gluckenspiel

Violin I

Violin II

Viola

Violoncello

Double Bass

I Stürmisch

$\text{♩} = 60$ $(\# \#)$ $\text{♩} = 120$

fl. Picc. f $\text{♩} = 120$ *(change to picc.)*

ob. f sub. pp

cl. in B f sub. pp

bsn f sub. pp ff pp

$\text{♩} = 60$ $\text{♩} = 120$

horn in F ff pp

tp. in C ff pp

glockensp. f pp *(brass m.)*

$\text{♩} = 60$ $\text{♩} = 120$

vl. I f ff

vl. II f ff

vla f ff

cello f sub. pp

bass f sub. pp

(1)

$D = D (=120)$
(pic.)

accl. poco a poco

$D = D (=120)$

accl. poco a poco

(plastic)

$D = D (=120)$

accl. poco a poco

2

Handwritten musical score for the first system, measures 10-15. The system includes five staves. The top staff has a treble clef and contains notes with accidentals (sharps and flats) and dynamic markings (f, ff). The bottom staff has a bass clef and contains notes with accidentals and dynamic markings (f, ff). A tempo marking $\text{♩} = 60$ is present. A box labeled [15] is above the fifth measure. The text "(back to flute)" is written below the tempo marking. The time signature $\frac{3}{4}$ is indicated at the end of the system.

Handwritten musical score for the second system, measures 10-15. The system includes three staves. The top staff has a treble clef and contains notes with accidentals and dynamic markings (f, ff). The middle staff has a treble clef and contains notes with accidentals and dynamic markings (f, ff). The bottom staff has a bass clef and contains notes with accidentals and dynamic markings (f, ff). A tempo marking $\text{♩} = 60$ is present. A box labeled [15] is above the fifth measure. The text "(B clar)" is written below the tempo marking. The time signature $\frac{3}{4}$ is indicated at the end of the system.

Handwritten musical score for the third system, measures 10-15. The system includes five staves. The top staff has a treble clef and contains notes with accidentals and dynamic markings (f, ff). The second staff has a treble clef and contains notes with accidentals and dynamic markings (f, ff). The third staff has a bass clef and contains notes with accidentals and dynamic markings (f, ff). The fourth staff has a bass clef and contains notes with accidentals and dynamic markings (f, ff). The bottom staff has a bass clef and contains notes with accidentals and dynamic markings (f, ff). A tempo marking $\text{♩} = 60$ is present. A box labeled [15] is above the fifth measure. The time signature $\frac{3}{4}$ is indicated at the end of the system.

(3)

Handwritten musical score for Flute, Oboe, Bassoon, and Clarinet. The score is in 4/4 time and features a key signature of one flat. A boxed measure number '20' is present at the top right of the system. The Flute part includes a triplet of eighth notes and a dynamic marking of *mp*. The Oboe part features a triplet of eighth notes and a dynamic marking of *mp*. The Bassoon part includes a triplet of eighth notes and a dynamic marking of *mp*. The Clarinet part includes a triplet of eighth notes and a dynamic marking of *mp*.

Handwritten musical score for Horn, Trumpet, and Trombone. The score is in 4/4 time and features a key signature of one flat. A boxed measure number '20' is present at the top right of the system. The Horn part includes a dynamic marking of *mp* and the instruction 'gest.'. The Trumpet part includes a dynamic marking of *mp* and the instruction 'mit Dämpfer'. The Trombone part includes a dynamic marking of *mp* and the instruction 'Dämpfer ab.'. The Horn part also includes the instruction '2. offnen' and a dynamic marking of *f*.

Handwritten musical score for Violin I, Violin II, Viola, Cello, and Bass. The score is in 4/4 time and features a key signature of one flat. A boxed measure number '20' is present at the top right of the system. All instruments in this system are marked with a whole rest, indicating they are silent during this passage.

(4)

Musical score for the first system, featuring woodwinds and strings. The system includes staves for Flute (Fl.), Oboe (ob.), Bassoon (bsn.), and strings. The music is in 3/4 time and consists of three measures. The first measure has a key signature of one sharp (F#) and a dynamic marking of *ff*. The second measure has a key signature of two sharps (F# and C#) and a dynamic marking of *ff*. The third measure has a key signature of one sharp (F#) and a dynamic marking of *mp*. There are various annotations such as *tr.* (trill) and *mf* (mezzo-forte) throughout the system.

Musical score for the second system, featuring woodwinds and strings. The system includes staves for Flute (Fl.), Oboe (ob.), Bassoon (bsn.), and strings. The music is in 3/4 time and consists of three measures. The first measure has a key signature of one sharp (F#) and a dynamic marking of *mf*. The second measure has a key signature of one sharp (F#) and a dynamic marking of *mf*. The third measure has a key signature of one sharp (F#) and a dynamic marking of *mp*. There are various annotations such as *glkcp. (plastic)*, *sub. p*, and *mf* (mezzo-forte) throughout the system.

Musical score for the third system, featuring woodwinds and strings. The system includes staves for Flute (Fl.), Oboe (ob.), Bassoon (bsn.), and strings. The music is in 3/4 time and consists of three measures. The first measure has a key signature of one sharp (F#) and a dynamic marking of *f cresc.*. The second measure has a key signature of one sharp (F#) and a dynamic marking of *f*. The third measure has a key signature of one sharp (F#) and a dynamic marking of *mp*. There are various annotations such as *tr.* (trill), *mf* (mezzo-forte), and *mp* (mezzo-piano) throughout the system.

5

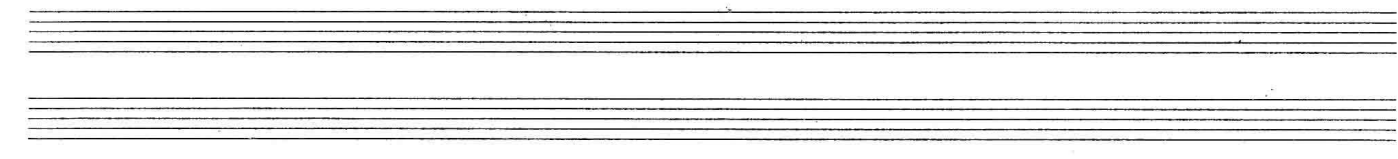
25

25

25

25

6



30

(pizz.) \uparrow
(fff)
(=b.)
(B^b clar) \uparrow
f
(picc) $\overbrace{\text{3}}$
P
(bsn) $\overbrace{\text{3}}$
P
mp \leftarrow \rightarrow f
P
(B^b clar)
P (bsn) \uparrow

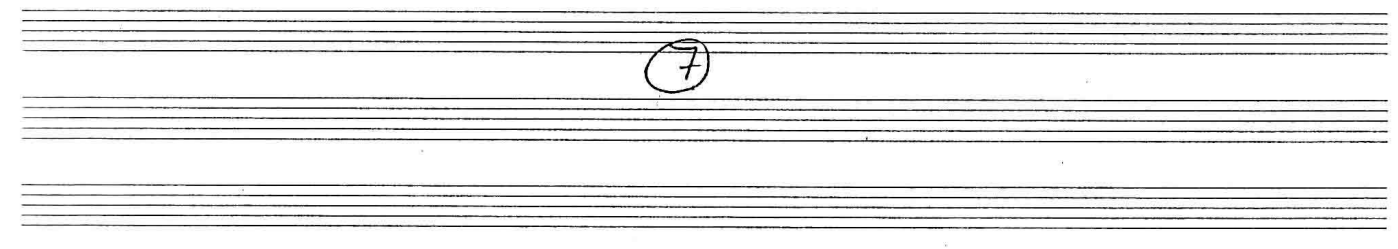
30

(f hra)
mf
(f horn)
P

30

mp
mp
mp
mp
P
P
P
P
P
P

7



Handwritten musical score for a symphony orchestra, measures 35-37. The score includes staves for woodwinds (flute, oboe, clarinet, bassoon), strings (violin I, violin II, viola, cello, bass), and percussion (trumpet, trombone, snare drum). Measure 35 features a flute solo with dynamics p, f, and mp. Measure 36 features a bassoon solo with dynamics p and mp. Measure 37 features violin I and II solos with dynamics p and mp. A circled '3' is written below the bottom staves.

Molto Adagio $\text{♩} = 46$

Violin (Vn.)

Cello

Violin (Vn.)

Cello

Violin (Vn.)

Cello

Violin (Vn.)

Cello

(9)

III Wuchtig (heavy, scherzo-like, but with broad gestures)

P=127

fl/picc. $\text{5/8} (2+3)$ - 2/4 $\text{7/8} (2+2+3)$ 3/4 - $\text{5/8} (3+2)$

ob. $\text{5/8} (2+3)$ - 2/4 - $\text{7/8} (2+2+3)$ 3/4 - $\text{5/8} (3+2)$

clarinet $\text{5/8} (2+3)$ - 2/4 $\text{7/8} (2+2+3)$ 3/4 - $\text{5/8} (3+2)$

bsn $\text{7/8} (2+3)$ - 2/4 $\text{7/8} (2+2+3)$ 3/4 - $\text{5/8} (3+2)$

P=127

haut $\text{5/8} (2+3)$ - 2/4 - $\text{7/8} (2+2+3)$ 3/4 - $\text{5/8} (3+2)$

trp (m) $\text{5/8} (2+3)$ - 2/4 - $\text{7/8} (2+2+3)$ 3/4 - $\text{5/8} (3+2)$

glocksp. $\text{5/8} (2+3)$ - 2/4 - $\text{7/8} (2+2+3)$ 3/4 - $\text{5/8} (3+2)$

P=127

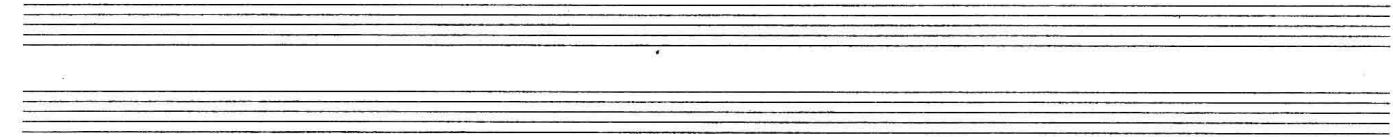
vn. I $\text{5/8} (2+3)$ 2/4 $\text{7/8} (2+2+3)$ 3/4 $\text{5/8} (3+2)$

vn. II $\text{5/8} (2+3)$ 2/4 $\text{7/8} (2+2+3)$ 3/4 $\text{5/8} (3+2)$

vla $\text{5/8} (2+3)$ 2/4 $\text{7/8} (2+2+3)$ 3/4 $\text{5/8} (3+2)$

cello $\text{7/8} (2+3)$ 2/4 $\text{7/8} (2+2+3)$ 3/4 $\text{5/8} (3+2)$

bass $\text{7/8} (2+3)$ 2/4 $\text{7/8} (2+2+3)$ 3/4 $\text{5/8} (3+2)$



5 (ff)

5

5

(11)

Handwritten musical score for woodwinds. The system includes parts for Flute (Fl.), Oboe (ob.), Bassoon (Bass.), and Bassoon (bsn.). A circled number '10' is written above the first measure. The notation features complex rhythmic patterns with 5/8 and 7/8 time signatures, and dynamic markings such as *f* and *mp*. The bassoon part includes the instruction *legato*.

Handwritten musical score for percussion. The system includes parts for French Horn (Frcn.), Tom-tom (Tpt.), and Snare Drum (Sncr.). A circled number '10' is written above the first measure. The notation shows rhythmic patterns with 5/8 and 7/8 time signatures.

Handwritten musical score for strings. The system includes parts for Violin I (vln I), Violin II (vln II), Viola (vla), Cello (cell), and Bass (bass.). A circled number '10' is written above the first measure. The notation features complex rhythmic patterns with 5/8 and 7/8 time signatures, and dynamic markings such as *f*.

(12)

Handwritten musical score for woodwinds. The system includes parts for Flute (Fl.), Oboe (ob.), Bassoon (bsn.), and Clarinet (cl.). The music is in 7/8 time and features complex rhythmic patterns with notes beamed in groups of 2+2+3. A first ending bracket labeled "15" spans the final two measures of the system. Dynamics include *ff* and *f*.

Handwritten musical score for strings. The system includes parts for Flute (Fl.), Trumpet (tp.), and Trombone (tr.). The music is in 7/8 time and features complex rhythmic patterns with notes beamed in groups of 2+2+3. A first ending bracket labeled "15" spans the final two measures of the system. Dynamics include *mp*.

Handwritten musical score for strings. The system includes parts for Violin I (vln I), Violin II (vln II), Viola (vln), Cello (cell.), and Bass (bass). The music is in 7/8 time and features complex rhythmic patterns with notes beamed in groups of 2+2+3. A first ending bracket labeled "15" spans the final two measures of the system. Dynamics include *ff* and *f*.

(13)

Handwritten musical score for the first system, measures 14-17. The score includes staves for Flute 1, Oboe, Bassoon, and Bass. Measure 14 features a key signature change to two sharps (F# and C#) and a 2/4 time signature. Measure 15 contains a triplet of eighth notes. Measure 16 includes a dynamic marking of *ff* and the instruction "sweetly". Measure 17 ends with a fermata.

Handwritten musical score for the second system, measures 18-21. The score includes staves for Flute 2, Flute 3, and Clarinet in B-flat. Measure 18 has a dynamic marking of *ff* and the instruction "(brassm.)". Measure 21 ends with a fermata.

Handwritten musical score for the third system, measures 22-25. The score includes staves for Violin I, Violin II, Viola, Cello, and Bass. Measure 22 features a dynamic marking of *f esp. molto*. Measure 23 includes a dynamic marking of *ff*. Measure 24 includes a dynamic marking of *fff*. Measure 25 ends with a fermata.

(14)

Handwritten musical score system 1. It consists of four staves. The first staff has a treble clef and a 3/4 time signature. The music begins with a first ending bracket labeled "1." and a key signature change to one flat (B-flat). The notation includes a triplet of eighth notes marked *ppp* and a triplet of quarter notes. A boxed number "25" is written in the right margin.

Handwritten musical score system 2. It consists of four staves, all of which are empty. A boxed number "25" is written in the right margin.

Handwritten musical score system 3. It consists of four staves. The first staff has a treble clef and a 3/4 time signature. The music includes dynamic markings such as *dim.* (diminuendo), *ppp* (pianissimo), and *pp* (piano). The notation features various note values and rests. A boxed number "25" is written in the right margin.

(15)

Handwritten musical score for woodwinds and strings. The score is organized into three systems of staves. The first system includes Piccolo, Oboe (ob.), Bassoon (Bsn.), and Bassoon (bsn.). The second system includes Flute (Flute), Clarinet (Cl.), and Saxophone (Saxsp.). The third system includes Violin I (vln I), Violin II (vln II), Viola (vln), Cello (cello), and Bass (bass). The music is written in 4/4 time with a key signature of one sharp (F#). The score consists of three measures. The first measure contains rests for all instruments. The second measure contains rests for all instruments. The third measure contains rests for all instruments. A double bar line is present at the end of the third measure, with a fermata symbol above it. The text "(Flute Attacca)" is written in the right margin of the first system. The dynamic marking "pppp" is used throughout the score.

16

IV Langsam ♩ = 46

(17)

Handwritten musical score for measures 14-15. The top staff is a single melodic line in treble clef. The bottom four staves are for piano accompaniment in treble and bass clefs. Measure 14 includes a triplet of eighth notes and a dynamic marking of *pp*. Measure 15 includes a triplet of eighth notes and a dynamic marking of *ppp*. A circled measure number '15' is present in the right margin.

Handwritten musical score for measures 19-20. The top staff is a single melodic line in treble clef. The bottom four staves are for piano accompaniment in treble and bass clefs. Measure 19 includes a dynamic marking of *p* and *pp*. Measure 20 includes a dynamic marking of *pp*. A circled measure number '20' is present in the right margin.

18

Handwritten musical score for measures 25-29. The score is written on five staves. The top staff has a treble clef and contains a melodic line with a triplet of eighth notes (F#, G, A) and a half note (B). A box labeled '25' is above the staff. The second staff has a treble clef and contains a melodic line with a half note (F#) and a half note (G). The third and fourth staves have treble clefs and contain a melodic line with a half note (F#) and a half note (G). The fifth staff has a bass clef and contains a melodic line with a half note (F#) and a half note (G). A box labeled '25' is above the second staff. The word 'esp.' is written above the second staff, and a triplet of eighth notes (F#, G, A) is written above the second staff. The word 'p' is written below the second staff. The score ends with a double bar line and a fermata over the final note.

Handwritten musical score for measures 30-34. The score is written on five staves. The top staff has a treble clef and contains a melodic line with a half note (F#) and a half note (G). A box labeled '30' is above the staff. The second staff has a treble clef and contains a melodic line with a half note (F#) and a half note (G). The third and fourth staves have treble clefs and contain a melodic line with a half note (F#) and a half note (G). The fifth staff has a bass clef and contains a melodic line with a half note (F#) and a half note (G). A box labeled '30' is above the second staff. The word 'p' is written below the second staff. The score ends with a double bar line and a fermata over the final note.

19

The image shows a handwritten musical score on a page of ten staves. The score is written in ink and includes the following elements:

- Staff 1 (Treble Clef):** Contains a few notes, including a half note with an accent (*ppp*) and a quarter note with an accent.
- Staff 2 (Bass Clef):** Contains a quarter note with an accent (*p*), a quarter note with an accent (*y*), and a triplet of eighth notes with an accent (*ppp*).
- Staff 3 (Bass Clef):** Contains a quarter note with an accent (*ppp*) and a half note with an accent (*ppp*).
- Staff 4 (Bass Clef):** Contains a quarter note with an accent (*ppp*) and a half note with an accent (*ppp*).
- Staff 5 (Bass Clef):** Contains a quarter note with an accent (*ppp*) and a half note with an accent (*ppp*).
- Staff 6 (Bass Clef):** Contains a quarter note with an accent (*ppp*) and a half note with an accent (*ppp*).
- Staff 7 (Bass Clef):** Contains a quarter note with an accent (*ppp*) and a half note with an accent (*ppp*).
- Staff 8 (Bass Clef):** Contains a quarter note with an accent (*ppp*) and a half note with an accent (*ppp*).
- Staff 9 (Bass Clef):** Contains a quarter note with an accent (*ppp*) and a half note with an accent (*ppp*).
- Staff 10 (Bass Clef):** Contains a quarter note with an accent (*ppp*) and a half note with an accent (*ppp*).

At the bottom of the page, the number "20" is circled in ink.